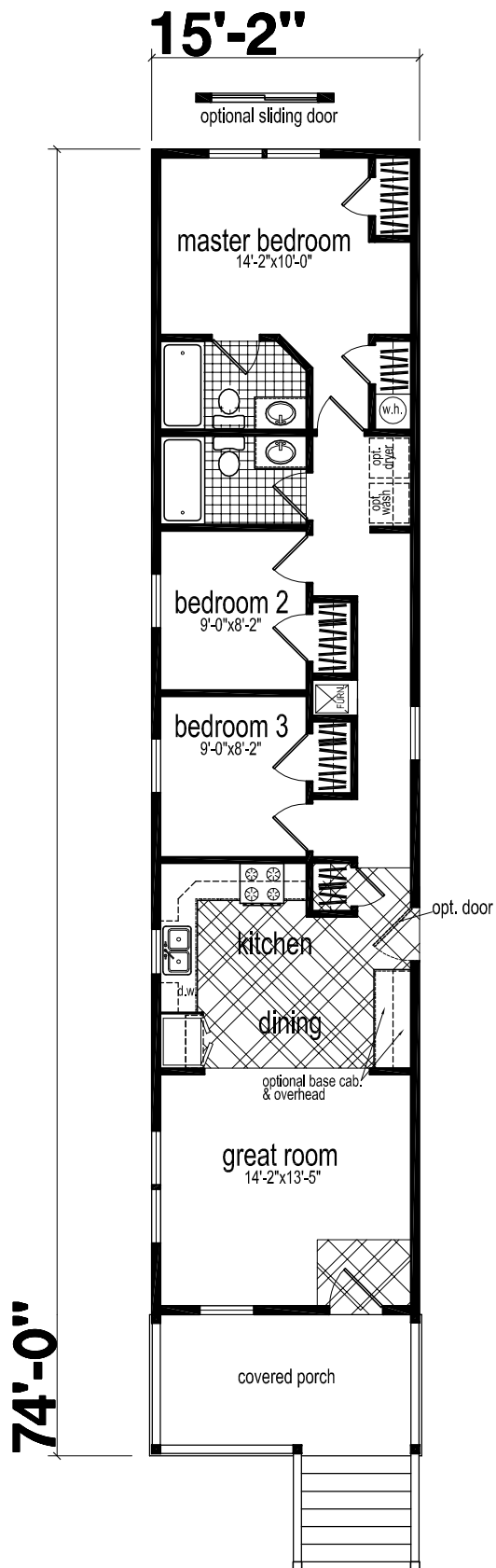


Palma I
 model C-421 - 3 bedrooms/1 bathroom
 1031 total sq./ft. (habitable + porch)
 habitable 910 sq./ft.
 covered porch 121 sq./ft.



Palma II
 model C-430 - 3 bedrooms/2 bathrooms
 1122 total sq./ft. (habitable + porch)
 habitable 1001 sq./ft.
 covered porch 121 sq./ft.